

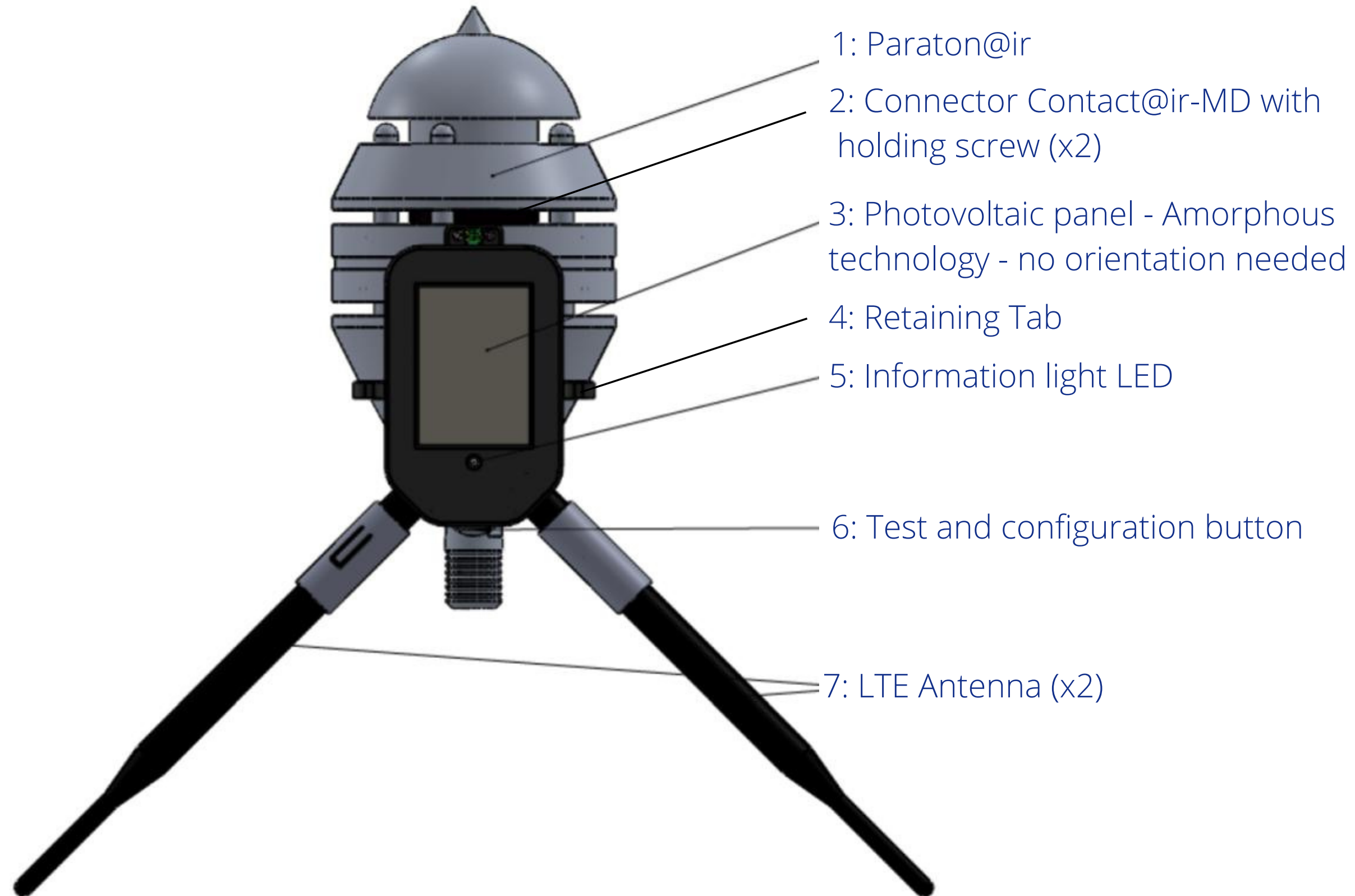
Contact@ir MD

Use our “Plug & Play” solution on our Contact@ir Ready range (Paraton@ir, Compt@ir, Alert@ir XT, Alert@ir DC...) and monitor your lightning protection installations in real time.

The Contact@ir MD transmitter uses the local mobile network to send critical information about your products.

This information contributes to the preventive maintenance of your installations without any necessary travel on your part.

Contact@ir MD



4G LTE	3G UMTS/HSDPA/HSUPA	2G GSM/GPRS/EDGE
<p>Long Term Evolution (LTE) Evolved UTRA (E-UTRA) Frequency/Time Division Duplex (FDD/TDD) DL Rx diversity</p>	<p>High Speed Packet Access (HSPA) UMTS Terrestrial Radio Access (UTRA) Frequency Division Duplex (FDD) DL Rx Diversity</p>	<p>Enhanced Data rate GSM Evolution (EDGE) GSM EGPRS Radio Access (GERA) Time Division Multiple Access (TDMA) DL Advanced Rx Performance Phase 1</p>
<p>LTE Power Class</p> <ul style="list-style-type: none"> Power Class 3 (23 dBm) 	<p>UMTS/HSDPA/HSUPA Power Class</p> <ul style="list-style-type: none"> Class 3 (24 dBm) 	<p>GSM/GPRS (GMSK) Power Class</p> <ul style="list-style-type: none"> Class 4 (33 dBm) for 850/900 band Class 1 (30 dBm) for 1800/1900 band <p>EDGE (8-PSK) Power Class</p> <ul style="list-style-type: none"> Class E2 (27 dBm) for 850/900 band Class E2 (26 dBm) for 1800/1900 band
<p>Data rate</p> <ul style="list-style-type: none"> LTE category 1: up to 10.3 Mbit/s DL, up to 5.2 Mbit/s UL 	<p>Data rate</p> <ul style="list-style-type: none"> HSDPA category 8: up to 7.2 Mbit/s DL HSUPA category 6: up to 5.76 Mbit/s UL 	<p>Data rate</p> <ul style="list-style-type: none"> GPRS multi-slot class 33², CS1-CS4, up to 107 kbit/s DL, 85.6 kbit/s UL EDGE multi-slot class 33², MCS1-MCS9, up to 296 kbit/s DL, 236.8 kbit/s UL

A dedicated emitter for a single product

Contact@ir® is a dedicated emitter for a single product (Paraton@ir or Compt@ir or Alert@ir XT or Alert@ir DC...). for a single product (Paraton@ir or Compt@ir or Alert@ir XT or Alert@ir DC...).

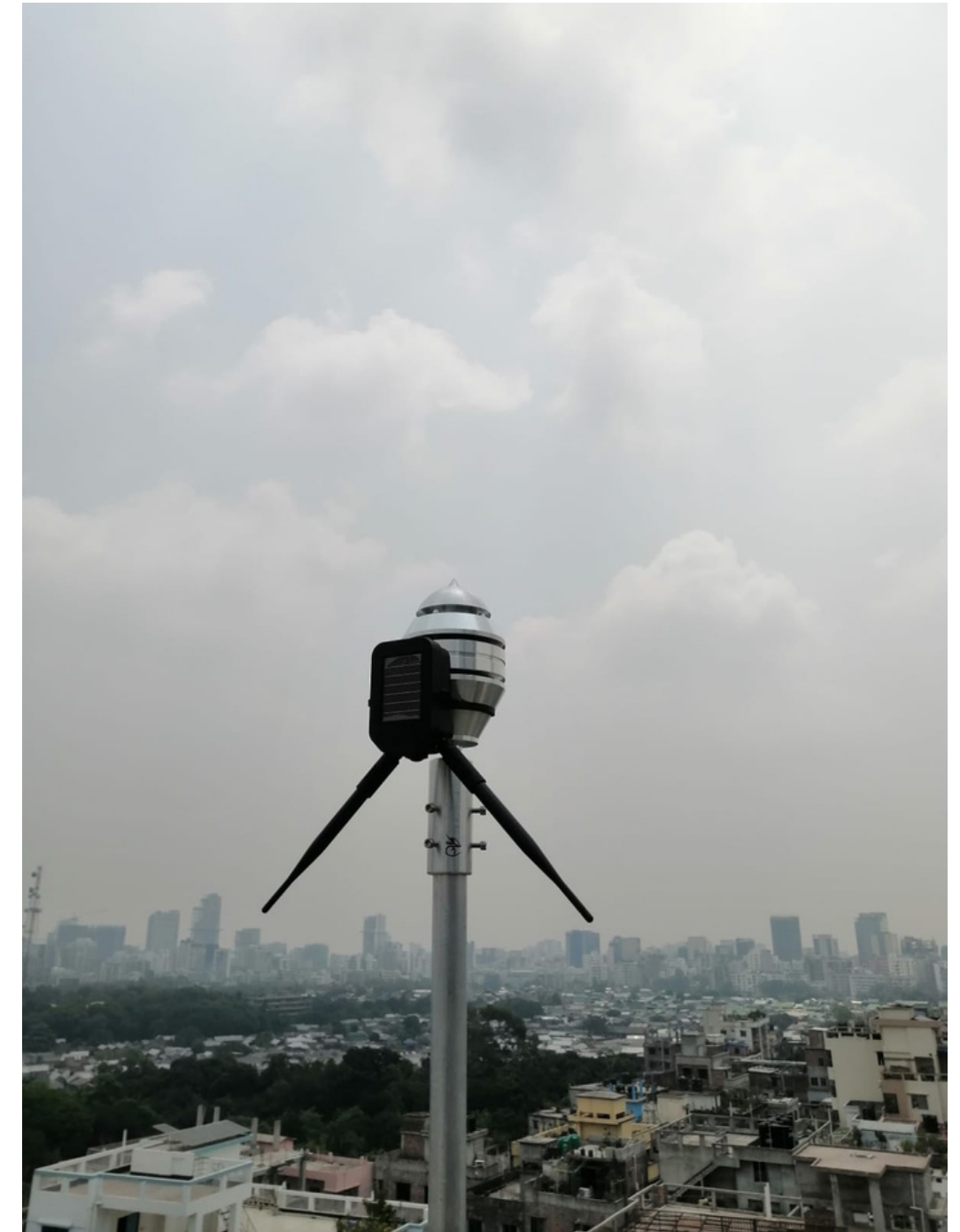
The use of the LPS Manager application will allow the final recording of the GPS position of the installation.



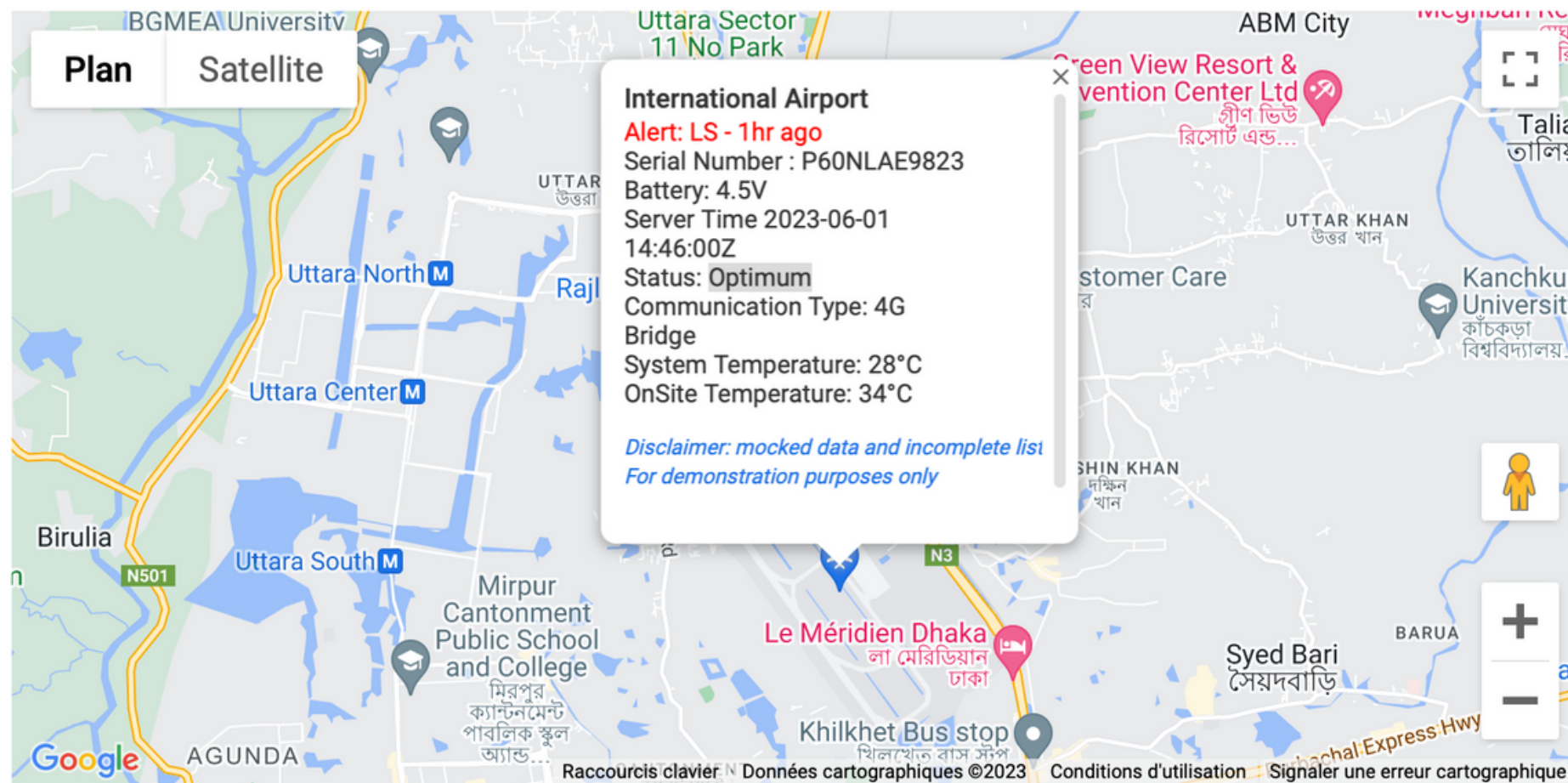
Remote reading

You do not need to be on the site of your lightning protection installation to view the data issued by Contact@ir MD.

Real-time data and alerts are sent to the LPS Manager app. Real-time alerts are also sent by email. Multiple accounts may receive information.



Remote verifications



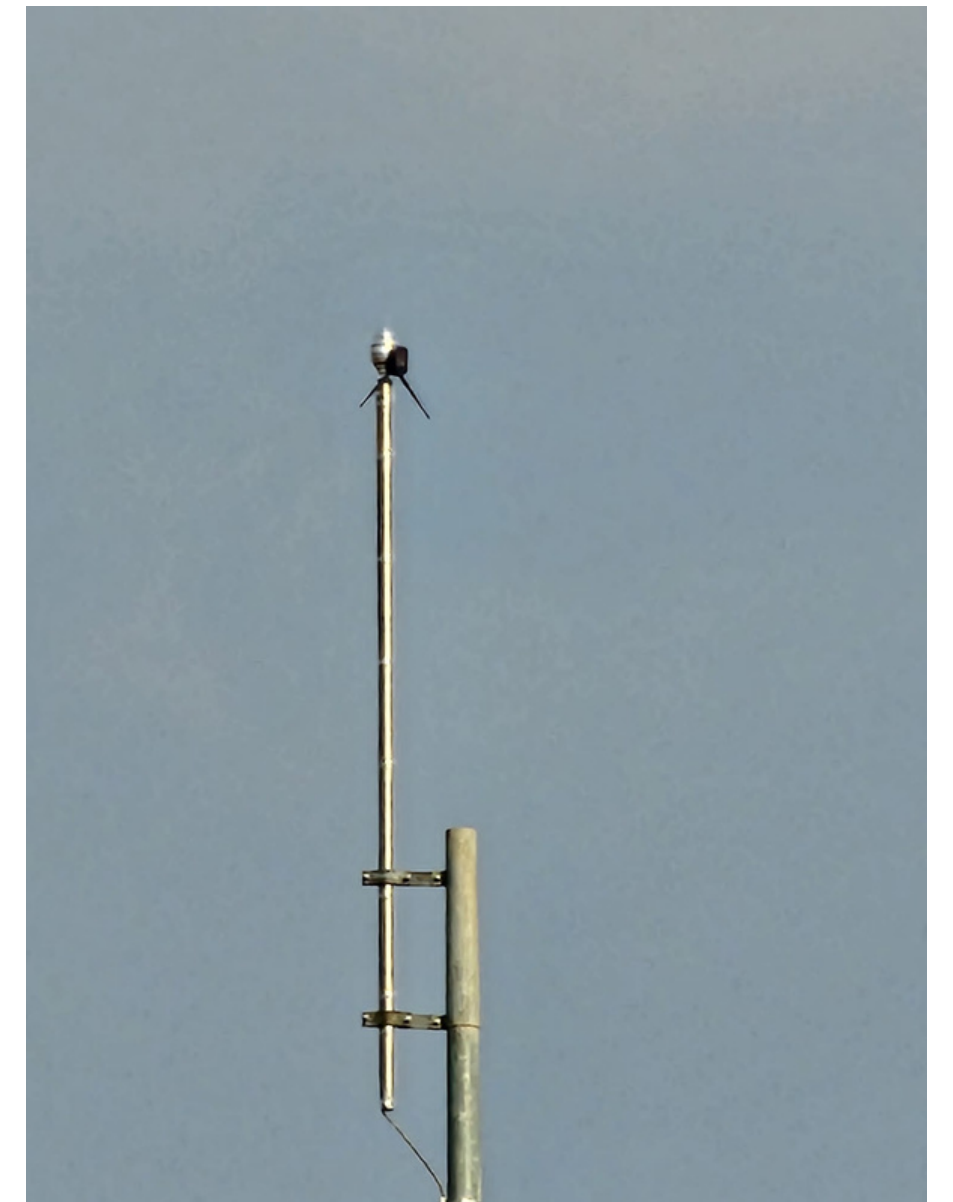
The information is sent to the France LPS Cloud and then distributed to the related accounts of the project concerned.

Mobile Data Network by SIM as a communication technology

Contact@ir MD is equipped with an international Mobile Data SIM.

LPS France ensures a low cost through international agreements with the largest local operators.

The solution is thus compatible with all networks (GPRS, Edge, 1G, 2G, 3G, 4G, 5G, 6G)



Internet connection

LPS France provides a complete solution including connections with SIM Data Mobile to ensure connection quality and secure management.

A renewable subscription will be offered to you by our sales department.

The Contact@ir MD cannot receive any network connection system other than that provided by LPS France.



Verification scope

The data transmitted by your Contact@ir MD can be sent from all places where a mobile network is available.

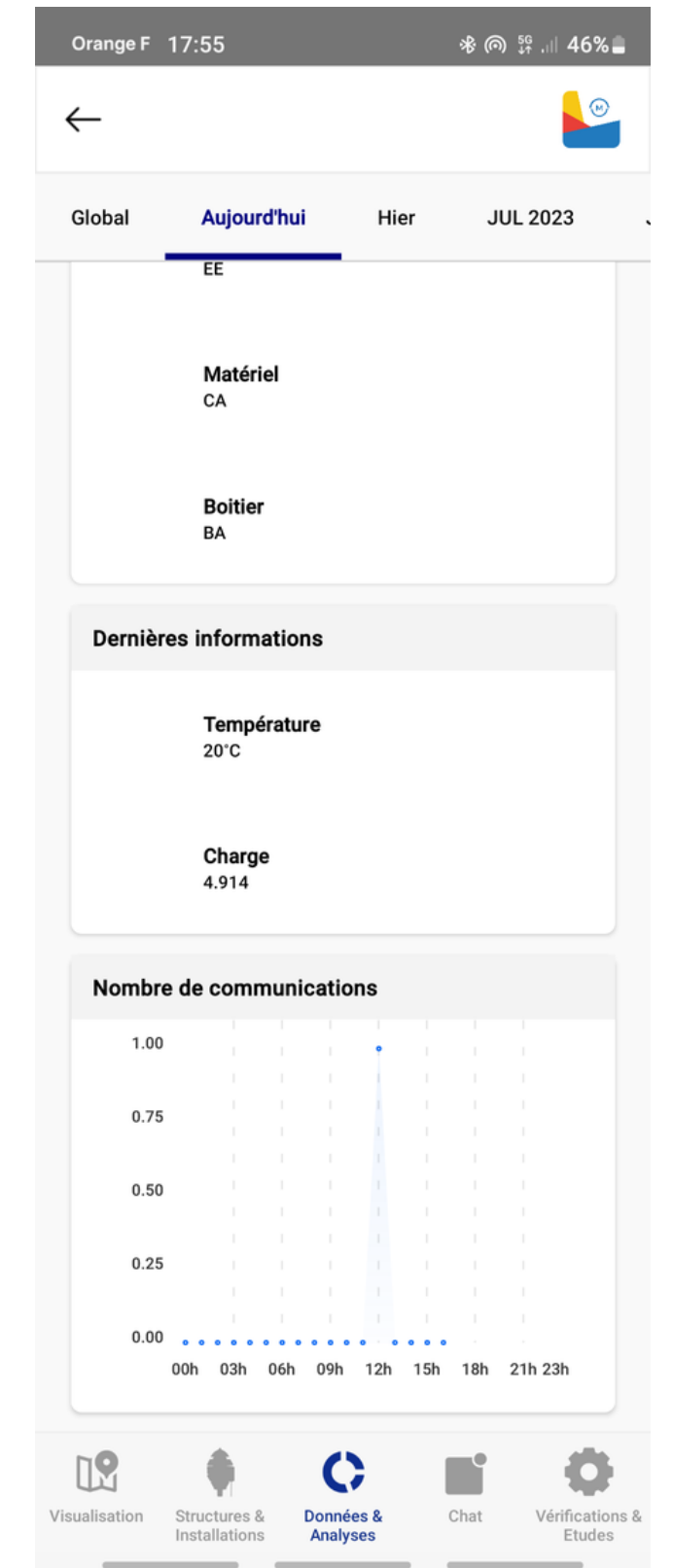


Verification objects :

- Operating status,
- Authentication,
- Battery level,
- Temperature

Contact@ir MD communicates the status every 12 hours and in real time during critical alerts.

At all times, you will get the operating status of the product to which it is connected and its authentication as well as the battery status (lithium free) and the temperature of the system.



Verification reading on LPS Manager

The data issued by Contact@ir MD is available on the **LPS Manager application** (www.lpsmanager.io).



No app to use for the configuration

The Contact@ir MD transmitter was developed to facilitate its use.

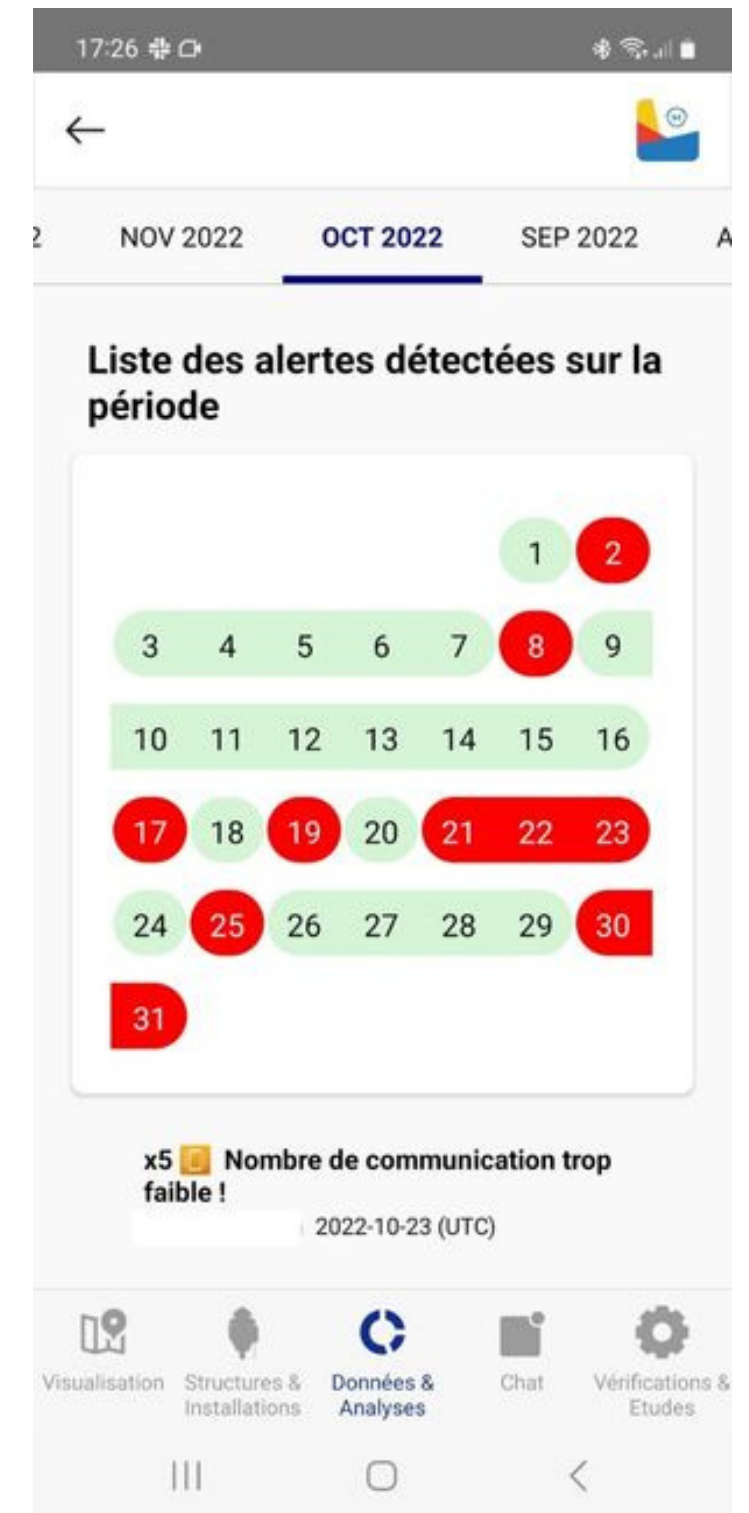
On first use, press the button located under the transmitter box and check by the LED on the front of the transmitter that communication is established.

No additional manipulation is necessary for the configuration of the product.



Data history

All data sent by Contact@ir MD are timestamped and logged.



Real-time alerts

when your Contact@ir MD detects an operating fault in your lightning protection installation, the persons concerned immediately receive an alert on LPS Manager or by email.

