



Contact@ir[®] + Dongl@ir[®]

Contact@ir[®] + Dongl@ir[®]



Your smart maintenance
Communicating
Lightning Protection Systems



Contact@ir® System

Your smart maintenance



The Contact@ir® transmitter with the Dongl@ir® receiver is a nomad on-site proximity diagnostic solution.

(solution giving access to one-time diagnosis not to an historical)

Contact@ir® + Dongl@ir®



- The Contact@ir® transmitter is connected and securely attached to the Contact@ir® Ready product to be monitored (Paraton@ir®, Compt@ir®, Alert@ir XT®, Alert@ir DC®...)
- The Dongl@ir® receiver is connected to the USB port of a smartphone (via an adapter) or an Android tablet where the LPS France application is installed
- The system allows the Contact@ir® Ready product to be tested nearby (up to 80 metres)
- No physical link between the Contact@ir® transmitter and the Dongl@ir® receiver
- Simplifies and secures the diagnosis of a product often difficult to access
- One-time diagnosis (no historical data list available with this solution)
- A customer account is required (contact us)



www.lpsfr.com

See the product

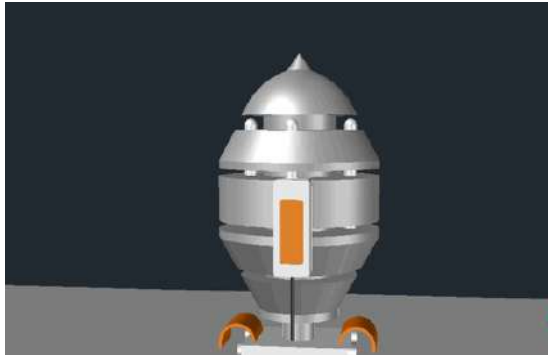


Download the LPS France app





Operating



The Contact@ir® transmitter is connected and securely attached to the Contact@ir® Ready product during product installation. No configuration required, "plug and play" product. (Example here on a Paraton@ir® ESE).

Contact@ir®
+
Dongl@ir®



The Contact@ir® transmitter continuously communicates the operating status of the Paraton@ir®. The Contact@ir® broadcast is regular every 100 seconds - 24/7



To make the diagnosis, a trip on site is necessary (maximum range of the system: 80 meters) with an Android smartphone or tablet to launch the LPS France application and be able to read the data.

Note: The Dongl@ir® receiver receives data from all nearby Contact@ir® transmitters.



MADE IN FRANCE

www.lpsfr.com

See the product



Contact@ir[®] System

Your smart maintenance

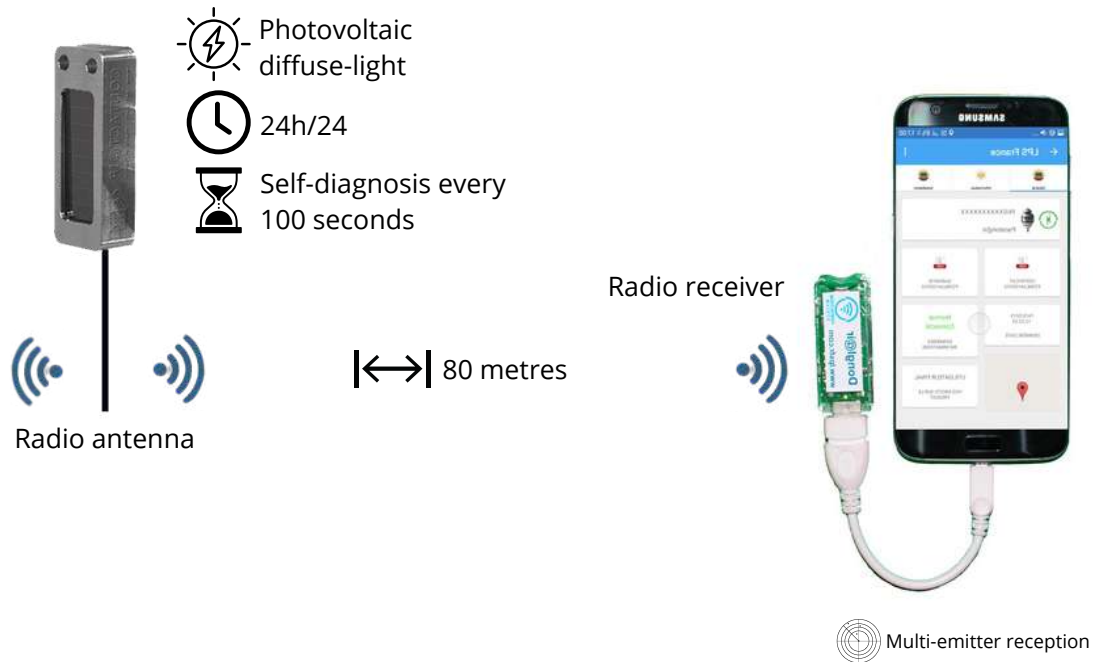


Contact@ir[®]
+
Dongl@ir[®]



Contact@ir[®] + Dongl@ir[®]

*Wireless Proximity Diagnosis
No history record*



MADE IN FRANCE

www.lpsfr.com

See the product



Download the LPS France app





Contact@ir®
+
Dongl@ir®



Contact@ir®

Reference	Function	Dimensions in mm	Weight in kg
50001	Radio transmitter	50x24x27	0,037

- Communicates the operating status and alerts of the product Contact@ir® Ready to which it is connected.
- Self-test diagnosis every 100 seconds + default alert
- Diffuse light photovoltaic module that does not require solar orientation and can also work with artificial light (Indoor)
- Low energy and short range radio emission (frequency used: 868 Mhz; other frequency on request)
- Emission every 100 seconds 24/7 (or real time if alert)

Dongl@ir®

Reference	Function	Max reception distance in m	Dimensions in mm	Weight in kg
50002	Radio receiver	80	50x24x27	0,037

- Allows the reception of data transmitted by the transmitter Contact@ir®
- Contact@ir® Ready punctual diagnostic tool (on-site travel required)
- Reading of the diagnostic results in the LPS France application
- Compliance with NFC 17-102:2011 and IEC 62305 standards and equivalent country standards



www.lpsfr.com

See the product





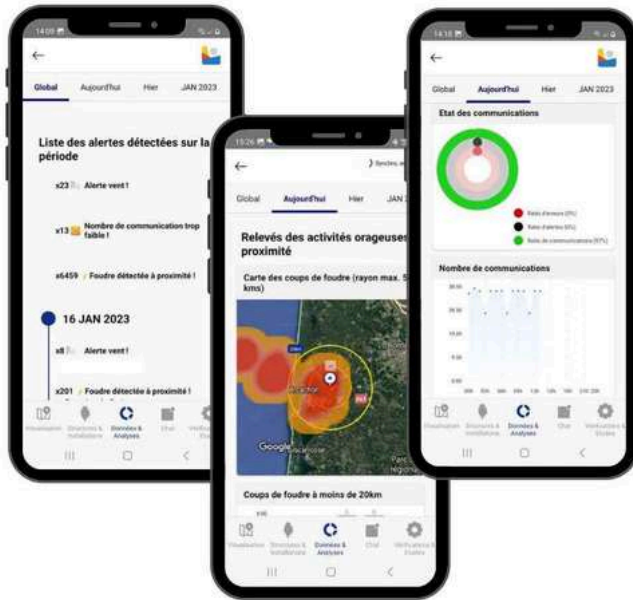
Contact@ir®
+
Dongl@ir®

Ensure the constant vigilance of all lightning protection installations:

- Maintain security of property and people 24/7
- Easily perform installation audits
- Meet standard maintenance requirements
- Preserve warranties (manufacturer, distributor, installer...)
- Manage installations remotely from the LPS Manager application



Contact@ir®
+
Rout@ir®



Contact@ir®MD



www.lpsfr.com

Contact@ir® System



lpsmanager.io





Contact@ir®
+
Dongl@ir®



Contact@ir®
+
Rout@ir®



Contact@ir® MD

Remote testing and Ongoing monitoring:



Paraton@ir®



Compt@ir®



Alert@ir® XT



Alert@ir® DC

Contact@ir® system communicates:

- **Regularly and continuously**, the operating status (self-diagnosis) of the Contact@ir® Ready products:

- Paraton@ir®
- Compt@ir®
- Alert@ir® XT
- Alert@ir® DC

- **In real time**, the alerts:

- lightning strikes
- current measurement
- product defect

With Dongl@ir real-time and historical alerts are not available.



www.lpsfr.com

Contact@ir® System



See the products
Contact@ir® Ready





Contact@ir® System at a glance

	Radio frequency technology		IOT technology
	Contact@ir® + Dongl@ir®	Contact@ir® + Rout@ir®	Contact@ir® MD
Without moving on site	X	V	V
Without prior configuration	V	X	V
Transmitter autonomous in energy (diffuse light technology*)	V	V	V
Double authentication of products	V	V	V
Verification of the working order of the products	V	V	V
Multi-LPS France products communication	V	V	X
Product data history	X	V	V
Real-time lightning alerts (timestamp and current measurement)	X	V	V
Integrated lightning strike counter	X	V	V
Data communication via the internet	X	V	V
Data communication via mobile network	X	X	Opt. V
Photovoltaic power supply	X	X	Opt. V
Communication architecture without dedicated receiver	X	X	V

*does not require solar orientation

www.lpsfr.com

Contact@ir® System



Contact@ir® System



Contact@ir® System

Your smart maintenance

Contact@ir®
+
Dongl@ir®

- ☀ Photovoltaic diffuse-light
- 🕒 24h/24
- 🕒 Self-diagnosis every 100 seconds

Radio antenna ↔ 80 metres ↔ Radio receiver

Multi-emitter reception

Contact@ir®
+
Rout@ir®

- ☀ Photovoltaic diffuse-light
- 🕒 24h/24
- 🕒 Self-diagnosis every 100 seconds
- ⚠ Alerts sent in real time

Radio antenna ↔ 300 metres ↔ Radio receiver

Multi-emitter reception

Contact@ir® MD

- ☀ Photovoltaic diffuse-light
- 🕒 24h/24
- 🕒 Self-diagnosis every 12 hours
- ⚠ Alerts sent in real time
- 📶 Integrated International eSIM 4G, 3G, 2G, Edge, GPRS



www.lpsfr.com

Contact@ir® System



Contact@ir® System



Contact@ir® System

Your smart maintenance

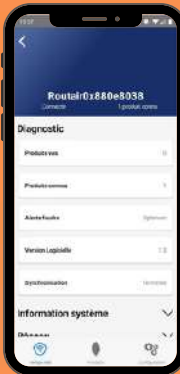
Data reading



LPS France application

- Used on site
- Product(s) diagnosis (1)
- Access to certificates
- Android only

Download



Rout@ir application

- Used on site
- Product(s) diagnosis (1)
- Reading of the alert history
- Internet configuration (wifi, Ethernet and mobile)
- Android

Download



LPS Manager + Rout@ir = real time + history (2).



LPS Manager application

- Can be used from anywhere
- Product diagnosis
- Reception of real time alerts
- Histories reading
- Access to certificates
- Android, IOS, Windows, Mac

Download



www.lpsfr.com

Contact@ir® System



Create your LPS France account in one of our applications
Use your LPS France account in all our applications

(1) The LPS France application and the Rout@ir application are designed to display all communicating products in their periphery.

(2) Receiving real-time alerts and reading data is possible from anywhere with the LPS Manager application if the Rout@ir is connected to the internet.