

Contact@ir[®] MD

Contact@ir[®] MD



Your smart maintenance
Communicating
Lightning Protection Systems



The Contact@ir[®] MD transmitter is a remote diagnostic and alert solution using the local mobile network.

Contact@ir MD

- The Contact@ir[®] MD transmitter is connected and securely attached to the Contact@ir[®] Ready product to be monitored (Paraton@ir[®], Compt@ir[®], Alert@ir XT[®]...)
- The Contact@ir[®] MD transmitter sends real-time alerts and regular verifications on the operation of the Contact@ir[®] Ready product to the LPS France cloud 24 hours a day.
- Contact@ir[®] MD uses photovoltaic energy by diffuse light (no solar orientation required)
- Contact@ir[®] MD automatically selects and configures the most efficient local mobile network to send data to the LPS France cloud. (integrated international eSIM card)
- Alerts and diagnostics are received in real time in the LPS Manager application from anywhere.
- A customer account is required (contact us)



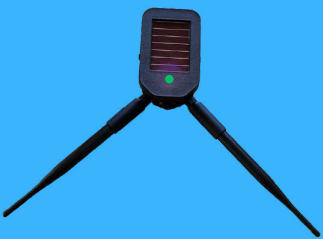
www.lpsfr.com

See the product



Contact@ir[®] MD

Remote diagnosis by mobile network
history and real-time alert




Contact@ir[®]
MD




www.lpsfr.com


See the product




 Photovoltaic
diffuse-light

 24h/24

 Self-diagnosis every
12 hours

 Alerts sent in real time

 Integrated International eSIM
4G, 3G, 2G, Edge, GPRS



Ipsmanager.io



Contact@ir[®] MD

| Reference | Function | Dimensions in mm | Weight in kg |
|-----------|--|---------------------------------------|--------------|
| 50011 | Local mobile network (IOT) transmitter | Case: 109x65x43 Antennas: 16 x 200 | 0,204 |

- Auto-configuration of local mobile network (integrated international SIM card)
- Photovoltaic power supply by diffuse light (does not require orientation)
- Contact@ir[®] Ready self-diagnostic every 12 hours
- Lightning alert sent in real time with lightning current measurement
- Other data sent during communications :
 - System temperature
 - Battery status
 - Network status
- Reading of data and reception of alerts in the LPS Manager application
- Compliance with NFC 17-102:2011 and IEC 62305 standards and equivalent country standards



Contact@ir[®]
MD



www.lpsfr.com

See the product



Operating

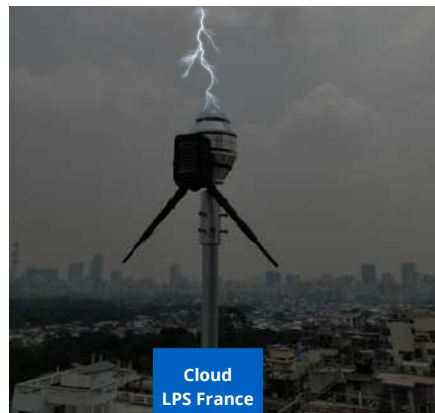


The Contact@ir® MD transmitter is connected and securely attached to the Contact@ir® Ready product (here Paraton@ir®). The search and configuration of the best available mobile network is automatic.

The contact@ir® MD communicates product data every 12 hours. Data is available from anywhere in the LPS Manager application.



Real time alerts



Alerts are sent without delay in the LPS France cloud (lightning impact, current measurement, product status, system temperature...).

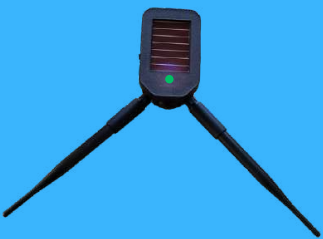


The LPS Manager app displays the alert in real time.

Verification of the lightning protection installation is necessary. Use LPS Manager to perform verifications and get detailed monitoring of your installations.



lpsmanager.io



Contact@ir®
MD



www.lpsfr.com

See the product





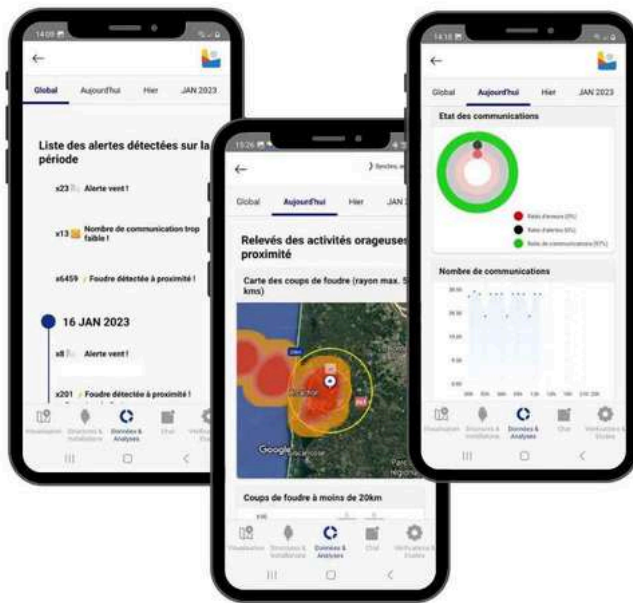
Contact@ir®
+
Dongl@ir®

Ensure the constant vigilance of all lightning protection installations:

- Maintain security of property and people 24/7
- Easily perform installation audits
- Meet standard maintenance requirements
- Preserve warranties (manufacturer, distributor, installer...)
- Manage installations remotely from the LPS Manager application



Contact@ir®
+
Rout@ir®



Contact@ir®MD



www.lpsfr.com

Contact@ir® System



lpsmanager.io





Contact@ir®
+
Dongl@ir®



Contact@ir®
+
Rout@ir®



Contact@ir® MD

Remote testing and Ongoing monitoring:



Paraton@ir®



Compt@ir®



Alert@ir® XT



Alert@ir® DC

Contact@ir® system communicates:

- **Regularly and continuously**, the operating status (self-diagnosis) of the Contact@ir® Ready products:

- Paraton@ir®
- Compt@ir®
- Alert@ir® XT
- Alert@ir® DC

- **In real time**, the alerts:

- lightning strikes
- current measurement
- product defect

With Dongl@ir real-time and historical alerts are not available.



www.lpsfr.com

Contact@ir® System



See the products
Contact@ir® Ready





Contact@ir® System at a glance

| | Radio frequency technology | | IOT technology |
|--|----------------------------|------------------------|----------------|
| | Contact@ir® + Dongl@ir® | Contact@ir® + Rout@ir® | Contact@ir® MD |
| Without moving on site | X | V | V |
| Without prior configuration | V | X | V |
| Transmitter autonomous in energy (diffuse light technology*) | V | V | V |
| Double authentication of products | V | V | V |
| Verification of the working order of the products | V | V | V |
| Multi-LPS France products communication | V | V | X |
| Product data history | X | V | V |
| Real-time lightning alerts (timestamp and current measurement) | X | V | V |
| Integrated lightning strike counter | X | V | V |
| Data communication via the internet | X | V | V |
| Data communication via mobile network | X | X | Opt. V |
| Photovoltaic power supply | X | X | Opt. V |
| Communication architecture without dedicated receiver | X | X | V |

*does not require solar orientation

www.lpsfr.com

Contact@ir® System



Contact@ir® System



Contact@ir® System

Your smart maintenance

Contact@ir®
+
Dongl@ir®

- ☀️ Photovoltaic diffuse-light
- 🕒 24h/24
- 🕒 Self-diagnosis every 100 seconds

Radio antenna ↔ 80 metres ↔ Radio receiver

Multi-emitter reception

Contact@ir®
+
Rout@ir®

- ☀️ Photovoltaic diffuse-light
- 🕒 24h/24
- 🕒 Self-diagnosis every 100 seconds
- ⚠️ Alerts sent in real time

Radio antenna ↔ 300 metres ↔ Radio receiver

Multi-emitter reception

Contact@ir® MD

- ☀️ Photovoltaic diffuse-light
- 🕒 24h/24
- 🕒 Self-diagnosis every 12 hours
- ⚠️ Alerts sent in real time
- 📶 Integrated International eSIM 4G, 3G, 2G, Edge, GPRS



www.lpsfr.com

Contact@ir® System



Contact@ir® System



Contact@ir® System

Your smart maintenance

Data reading



Contact@ir®
+
Dongl@ir®



LPS France application

- Used on site
- Product(s) diagnosis (1)
- Access to certificates
- Android only

Download



Contact@ir®
+
Rout@ir®



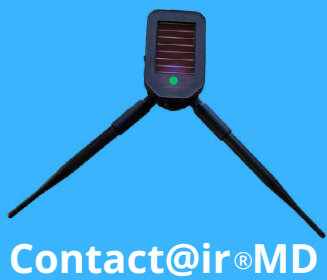
Rout@ir application

- Used on site
- Product(s) diagnosis (1)
- Reading of the alert history
- Internet configuration (wifi, Ethernet and mobile)
- Android

Download



LPS Manager + Rout@ir = real time + history (2).



Contact@ir®MD



LPS Manager application

- Can be used from anywhere
- Product diagnosis
- Reception of real time alerts
- Histories reading
- Access to certificates
- Android, IOS, Windows, Mac

Download



www.lpsfr.com

Contact@ir® System



Create your LPS France account in one of our applications
Use your LPS France account in all our applications

(1) The LPS France application and the Rout@ir application are designed to display all communicating products in their periphery.

(2) Receiving real-time alerts and reading data is possible from anywhere with the LPS Manager application if the Rout@ir is connected to the internet.