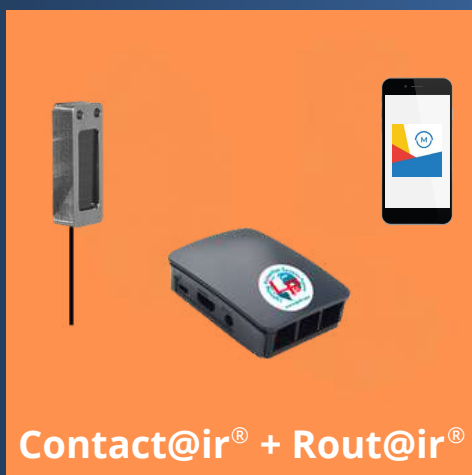
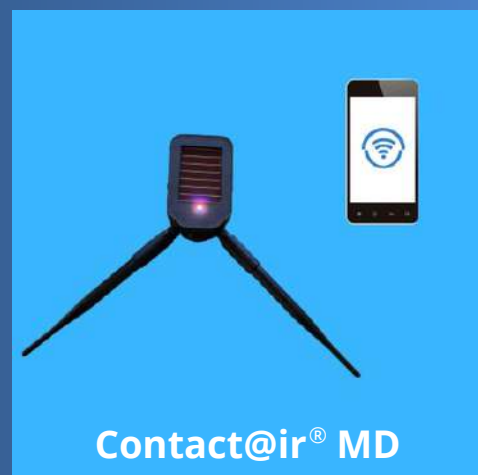


Contact@ir<sup>®</sup> + Dongle@ir<sup>®</sup>



Contact@ir<sup>®</sup> + Rout@ir<sup>®</sup>



Contact@ir<sup>®</sup> MD

# Contact@ir<sup>®</sup> System



Your smart maintenance  
Communicating  
Lightning Protection Systems





Contact@ir®  
+  
Dongl@ir®

Ensure the constant vigilance of all lightning protection installations:

- Maintain security of property and people 24/7
- Easily perform installation audits
- Meet standard maintenance requirements
- Preserve warranties (manufacturer, distributor, installer...)
- Manage installations remotely from the LPS Manager application



Contact@ir®  
+  
Rout@ir®



Contact@ir®MD



www.lpsfr.com

Contact@ir® System



lpsmanager.io





Contact@ir®  
+  
Dongl@ir®



Contact@ir®  
+  
Rout@ir®



Contact@ir®MD

## Remote testing and Ongoing monitoring:



Paraton@ir®



Compt@ir®



Alert@ir® XT



Alert@ir® DC

### Contact@ir® system communicates:

- **Regularly and continuously**, the operating status (self-diagnosis) of the Contact@ir® Ready products:

- Paraton@ir®
- Compt@ir®
- Alert@ir® XT
- Alert@ir® DC

- **In real time**, the alerts:

- lightning strikes
- current measurement
- product defect

With Dongl@ir real-time and historical alerts are not available.



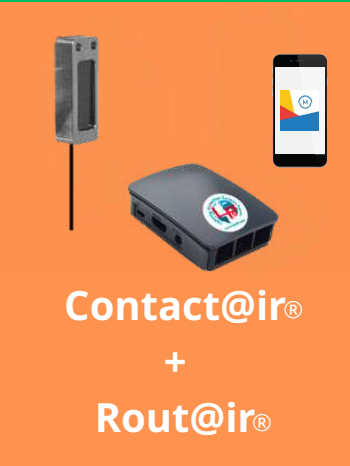
www.lpsfr.com

Contact@ir® System



See the products  
Contact@ir® Ready





## Contact@ir® System at a glance

	Radio frequency technology		IOT technology
	Contact@ir® + Dongl@ir®	Contact@ir® + Rout@ir®	Contact@ir® MD
Without moving on site	X	V	V
Without prior configuration	V	X	V
Transmitter autonomous in energy (diffuse light technology*)	V	V	V
Double authentication of products	V	V	V
Verification of the working order of the products	V	V	V
Multi-LPS France products communication	V	V	X
Product data history	X	V	V
Real-time lightning alerts (timestamp and current measurement)	X	V	V
Integrated lightning strike counter	X	V	V
Data communication via the internet	X	V	V
Data communication via mobile network	X	X	Opt. V
Photovoltaic power supply	X	X	Opt. V
Communication architecture without dedicated receiver	X	X	V

\*does not require solar orientation



Contact@ir® System



# Contact@ir® System

Your smart maintenance

**Contact@ir®**  
+  
**Dongl@ir®**

- ☀ Photovoltaic diffuse-light
- 🕒 24h/24
- ⌚ Self-diagnosis every 100 seconds

Radio antenna ↔ 80 metres ↔ Radio receiver

Multi-emitter reception

**Contact@ir®**  
+  
**Rout@ir®**

- ☀ Photovoltaic diffuse-light
- 🕒 24h/24
- ⌚ Self-diagnosis every 100 seconds
- ⚠ Alerts sent in real time

Radio antenna ↔ 300 metres ↔ Radio receiver

Multi-emitter reception

**Contact@ir® MD**

- ☀ Photovoltaic diffuse-light
- 🕒 24h/24
- ⌚ Self-diagnosis every 12 hours
- ⚠ Alerts sent in real time
- 📶 Integrated International eSIM 4G, 3G, 2G, Edge, GPRS



www.lpsfr.com

Contact@ir® System



Contact@ir® System



# Contact@ir® System

Your smart maintenance

## Data reading



### LPS France application

- Used on site
- Product(s) diagnosis (1)
- Access to certificates
- Android only

Download



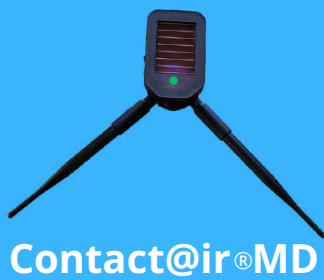
### Rout@ir application

- Used on site
- Product(s) diagnosis (1)
- Reading of the alert history
- Internet configuration (wifi, Ethernet and mobile)
- Android

Download



**LPS Manager + Rout@ir = real time + history (2).**



### LPS Manager application

- Can be used from anywhere
- Product diagnosis
- Reception of real time alerts
- Histories reading
- Access to certificates
- Android, IOS, Windows, Mac

Download



www.lpsfr.com

Contact@ir® System



**Create** your LPS France account in one of our applications  
**Use** your LPS France account in all our applications

(1) The LPS France application and the Rout@ir application are designed to display all communicating products in their periphery.

(2) Receiving real-time alerts and reading data is possible from anywhere with the LPS Manager application if the Rout@ir is connected to the internet.

# Contact@ir® System

Your smart maintenance



**The Contact@ir® transmitter with the Dongl@ir® receiver is a nomad on-site proximity diagnostic solution.**

*(solution giving access to one-time diagnosis not to an historical)*

## Contact@ir® + Dongl@ir®



- The Contact@ir® transmitter is connected and securely attached to the Contact@ir® Ready product to be monitored (Paraton@ir®, Compt@ir®, Alert@ir XT®, Alert@ir DC®...)
- The Dongl@ir® receiver is connected to the USB port of a smartphone (via an adapter) or an Android tablet where the LPS France application is installed
- The system allows the Contact@ir® Ready product to be tested nearby (up to 80 metres)
- No physical link between the Contact@ir® transmitter and the Dongl@ir® receiver
- Simplifies and secures the diagnosis of a product often difficult to access
- One-time diagnosis (no historical data list available with this solution)
- A customer account is required (contact us)



[www.lpsfr.com](http://www.lpsfr.com)

See the product



Download the LPS France app





## Operating



The Contact@ir® transmitter is connected and securely attached to the Contact@ir® Ready product during product installation. No configuration required, "plug and play" product. (Example here on a Paraton@ir® ESE).

Contact@ir®  
+  
Dongl@ir®

The Contact@ir® transmitter continuously communicates the operating status of the Paraton@ir®. The Contact@ir® broadcast is regular every 100 seconds - 24/7



To make the diagnosis, a trip on site is necessary (maximum range of the system: 80 meters) with an Android smartphone or tablet to launch the LPS France application and be able to read the data.

*Note: The Dongl@ir® receiver receives data from all nearby Contact@ir® transmitters.*

**MADE IN FRANCE**

www.lpsfr.com

See the product







Contact@ir<sup>®</sup>  
+  
Dongl@ir<sup>®</sup>



MADE IN FRANCE

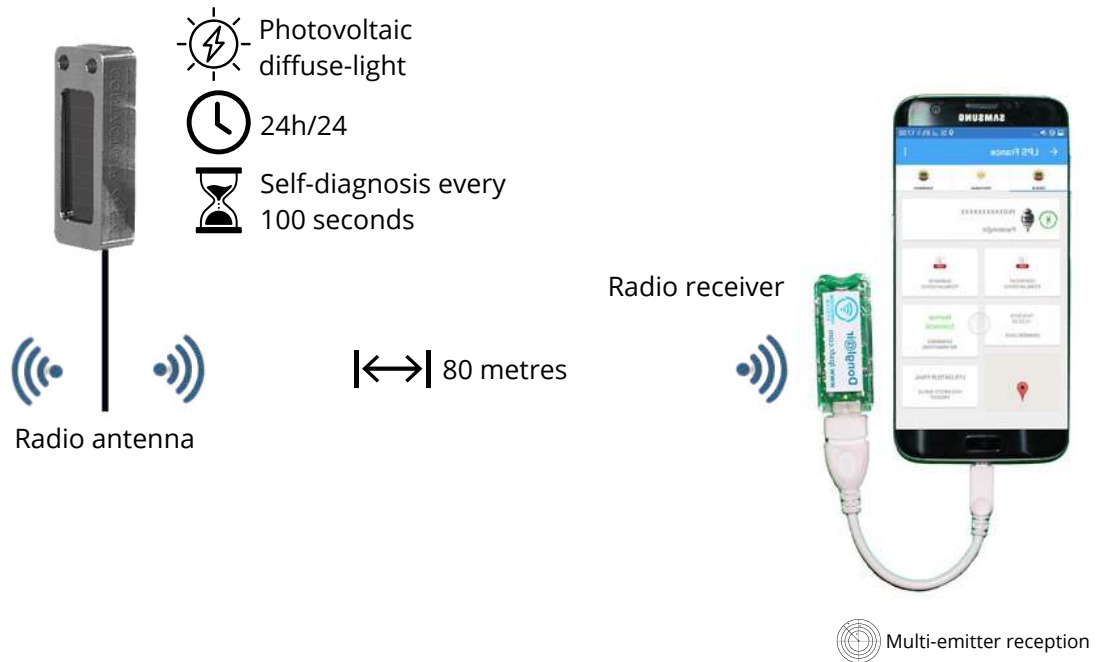
www.lpsfr.com

See the product



## Contact@ir<sup>®</sup> + Dongl@ir<sup>®</sup>

*Wireless Proximity Diagnosis  
No history record*



Download the LPS France app





Contact@ir<sup>®</sup>  
+  
Dongl@ir<sup>®</sup>



## Contact@ir<sup>®</sup>

Reference	Function	Dimensions in mm	Weight in kg
50001	Radio transmitter	50x24x27	0,037

- Communicates the operating status and alerts of the product Contact@ir<sup>®</sup> Ready to which it is connected.
- Self-test diagnosis every 100 seconds + default alert
- Diffuse light photovoltaic module that does not require solar orientation and can also work with artificial light (Indoor)
- Low energy and short range radio emission (frequency used: 868 Mhz; other frequency on request)
- Emission every 100 seconds 24/7 (or real time if alert)

## Dongl@ir<sup>®</sup>

Reference	Function	Max reception distance in m	Dimensions in mm	Weight in kg
50002	Radio receiver	80	50x24x27	0,037

- Allows the reception of data transmitted by the transmitter Contact@ir<sup>®</sup>
- Contact@ir<sup>®</sup> Ready punctual diagnostic tool (on-site travel required)
- Reading of the diagnostic results in the LPS France application
- Compliance with NFC 17-102:2011 and IEC 62305 standards and equivalent country standards



[www.lpsfr.com](http://www.lpsfr.com)

See the product



# Contact@ir® System

Your smart maintenance



The **Contact@ir®** transmitter combined with the **Rout@ir®** receiver is a sedentary solution for real-time diagnosis, history and alert.

## Contact@ir® + Rout@ir®

- The Contact@ir® transmitter is connected and securely attached to the Contact@ir® Ready product to be monitored (Paraton@ir®, Compt@ir®, Alert@ir XT®, Alert@ir DC®...)
- The Rout@ir® receiver is connected to an electrical outlet and is placed inside a building while its antenna (supplied) is placed outside.
- The system enables the reception and recording of real-time alerts and regular verifications on the operation of nearby Contact@ir® Ready products.
- No physical link between the Contact@ir® transmitter and the Rout@ir® receiver (Use of short-range radio wave - 300 meters maximum).
- Consultation of recordings by the Rout@ir application (Android)
- If the Rout@ir is connected to the internet, alerts and diagnostics are received in real time in the LPS Manager application from anywhere.
- A customer account is required (contact us)



[www.lpsfr.com](http://www.lpsfr.com)

See the product



Download the Rout@ir app

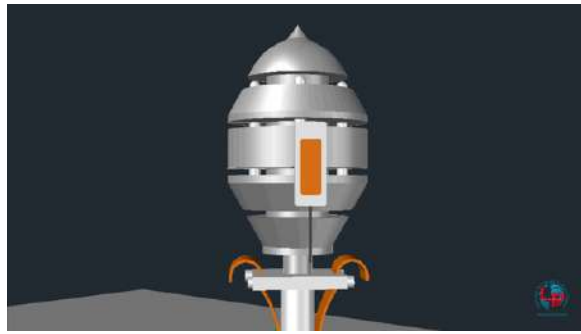


# Contact@ir® System

Your smart maintenance

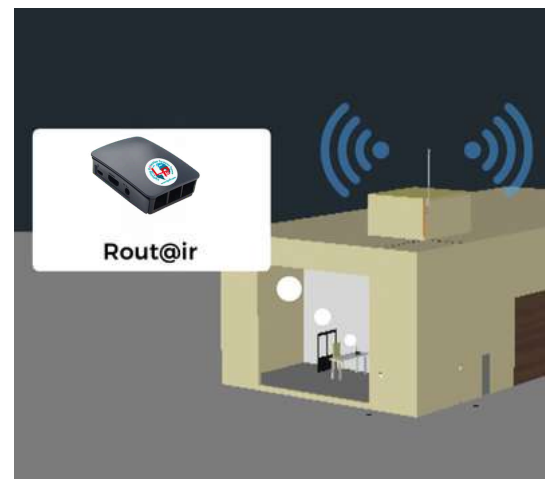


## Operating



The Contact@ir® transmitter is connected and securely attached to the Contact@ir® Ready product during product installation. No configuration required, "plug and play" product. (Example here on a Paraton@ir® ESE).

The Contact@ir® transmitter continuously communicates the operating status of the Paraton@ir®. The Rout@ir® receiver records the data. The information is available on-site with the Rout@ir® app for Android. They are sent to the LPS France cloud if the Rout@ir® is connected to the internet. The LPS Manager application allows remote consultation of this information.



Contact@ir®  
+  
Rout@ir®

## Real time alerts



When the Paraton@ir® is struck by lightning, the Contact@ir® immediately issues the alert. The Rout@ir® receives the alert and immediately sends the information to the LPS France cloud (internet connection is compulsory, otherwise it saves it for a later connection).



The LPS Manager app displays the alert in real time.

Verification of the lightning protection installation is necessary. Use LPS Manager to perform audits and get detailed monitoring of your installations.



lpsmanager.io

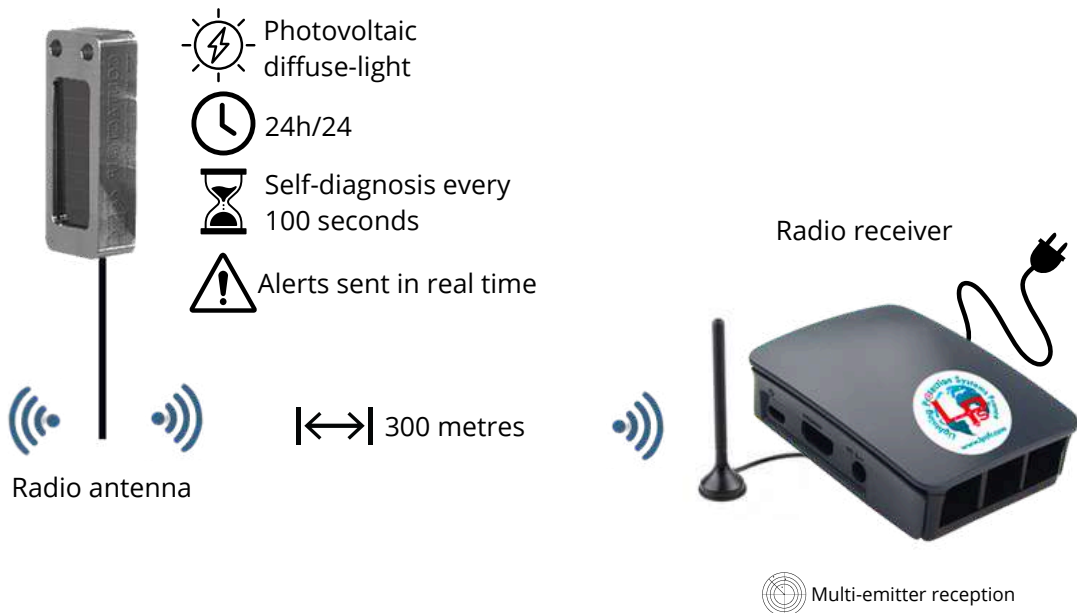




Contact@ir<sup>®</sup>  
+  
Rout@ir<sup>®</sup>

## Contact@ir<sup>®</sup> + Rout@ir<sup>®</sup>

*Wireless proximity piagnostic  
history and real-time alert*



MADE IN FRANCE

www.lpsfr.com

See the product



Download the Rout@ir app





Contact@ir®  
+  
Rout@ir®

## Contact@ir®

Reference	Function	Dimensions in mm	Weight in kg
50001	Radio emitter	50x24x27	0,037

- Communicates the operating status and alerts of the product Contact@ir® Ready to which it is connected.
- Self-test diagnosis every 100 seconds 24/7
- Real-time: Impact alert with lightning current measurement + Alert default + transmitter disconnect alert
- Diffuse light photovoltaic module that does not require solar orientation and can also work with artificial light (Indoor)
- Low energy and short range radio emission (frequency used: 868 Mhz; other frequency on request)
- Emission every 100 seconds 24/7 (or real time if alert)

## Rout@ir®

Reference	Function	Max reception distance in m	Dimensions in mm	Weight in kg
50003	Récepteur radio	300 (*)	300x220x35	0,310

- Receipt of data from the Contact@ir® transmitter(s) within scope
- Contact@ir® Ready product diagnostic and monitoring Tool with data recording and history.
- Reading of the data received with a smartphone or tablet close by with Bluetooth connection in the Rout@ir app (Android)
- Reading of data and receiving of real-time alerts in the application LPS Manager (remote) if the Rout@ir® is connected to the internet (possible in Wifi, Ethernet, mobile data). *API disponible, nous consulter.*
- Compliance with NFC 17-102:2011 and IEC 62305 standards and equivalent country standards

(\*) Maximum distance between Contact@ir® transmitter and Rout@ir receiver®



www.lpsfr.com

See the product



**The Contact@ir<sup>®</sup> MD transmitter is a remote diagnostic and alert solution using the local mobile network.**

## Contact@ir<sup>®</sup> MD

- The Contact@ir<sup>®</sup> MD transmitter is connected and securely attached to the Contact@ir<sup>®</sup> Ready product to be monitored (Paraton@ir<sup>®</sup>, Compt@ir<sup>®</sup>, Alert@ir XT<sup>®</sup>...)
- The Contact@ir<sup>®</sup> MD transmitter sends real-time alerts and regular verifications on the operation of the Contact@ir<sup>®</sup> Ready product to the LPS France cloud 24 hours a day.
- Contact@ir<sup>®</sup> MD uses photovoltaic energy by diffuse light (no solar orientation required)
- Contact@ir<sup>®</sup> MD automatically selects and configures the most efficient local mobile network to send data to the LPS France cloud. (integrated international eSIM card)
- Alerts and diagnostics are received in real time in the LPS Manager application from anywhere.
- A customer account is required (contact us)



[www.lpsfr.com](http://www.lpsfr.com)

See the product



## Contact@ir<sup>®</sup> MD

Remote diagnosis by mobile network  
history and real-time alert





Contact@ir<sup>®</sup>  
MD




 Photovoltaic  
diffuse-light

 24h/24

 Self-diagnosis every  
12 hours

 Alerts sent in real time

 Integrated International eSIM  
4G, 3G, 2G, Edge, GPRS



[www.lpsfr.com](http://www.lpsfr.com)

See the product



[Ipsmanager.io](http://Ipsmanager.io)

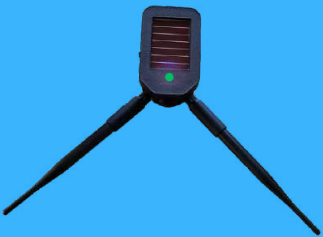




## Contact@ir<sup>®</sup> MD

Reference	Function	Dimensions in mm	Weight in kg
50011	Local mobile network (IOT) transmitter	Case: 109x65x43 Antennas: 16 x 200	0,204

- Auto-configuration of local mobile network (integrated international SIM card)
- Photovoltaic power supply by diffuse light (does not require orientation)
- Contact@ir<sup>®</sup> Ready self-diagnostic every 12 hours
- Lightning alert sent in real time with lightning current measurement
- Other data sent during communications :
  - System temperature
  - Battery status
  - Network status
- Reading of data and reception of alerts in the LPS Manager application
- Compliance with NFC 17-102:2011 and IEC 62305 standards and equivalent country standards



Contact@ir<sup>®</sup>  
MD



[www.lpsfr.com](http://www.lpsfr.com)

See the product



## Operating

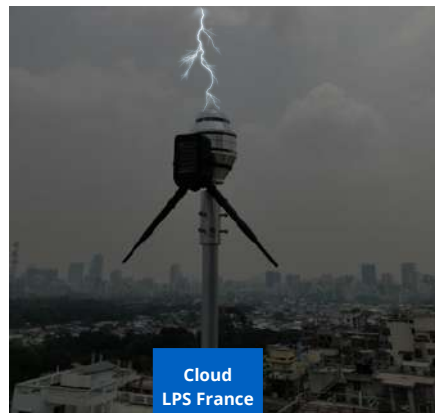


The Contact@ir® MD transmitter is connected and securely attached to the Contact@ir® Ready product (here Paraton@ir®). The search and configuration of the best available mobile network is automatic.

The contact@ir® MD communicates product data every 12 hours. Data is available from anywhere in the LPS Manager application.



## Real time alerts



Alerts are sent without delay in the LPS France cloud (lightning impact, current measurement, product status, system temperature...).

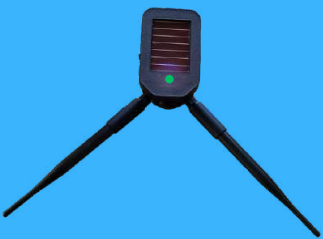


The LPS Manager app displays the alert in real time.

Verification of the lightning protection installation is necessary. Use LPS Manager to perform verifications and get detailed monitoring of your installations.



lpsmanager.io



Contact@ir®  
MD



www.lpsfr.com

See the product

